



## \* CHANGING TOP LEVER & LEVER SPRINGS

REFER TO THE SCHEMATIC BELOW FOR REFERENCES

© James L. White, S&W Supply Company, 2009

**I RECOMMEND THAT A GUNSMITH PERFORM THE FOLLOWING TASK BUT IF YOU ARE HANDY AND UNDERSTAND THE DYNAMICS OF THIS OPERATION – HAVE AT IT**

1. Remove trigger from Receiver.

**You will need to remove both Firing Pins by the following instructions and be certain that the LEVER is in its HOME POSITION (6 o'clock).**

2. Depending upon your Receiver style, Type 4 hopefully, its type will determine the method in removing the bottom Firing Pin. If your Receiver has Perazzi #136, Top Lever Stop Plate, then proceed, otherwise a different approach is necessary.
3. If your receiver had the Top Lever Release Pin located at 12 o'clock on the face of the receiver, see addendum at end of this document.
4. This is the tricky part (READ CAREFULLY): Drive out pin #128 for the Firing Pins, but ONLY drive it partially out from the LEFT-to-the-RIGHT, such that the pin remains IN THE RECEIVER. You want to drive this pin out only as far as necessary to release the Firing Pin, BUT LEAVE in far enough to retain the Stop Plate #136. It is a big pain to remove the Stop Plate completely and then reinstall parts 134, 135, and 137.
5. Remove top and bottom firing pins AND remove their small recoil springs. Many times this recoil spring will remain in the Receiver. Use a Q-Tip and spin it to remove the coil. You MUST remove this coil (and you will also want to clean this cavity very thoroughly).
6. Turn Receiver up-side-down.
7. With a small drift punch (~1/8" diameter), you will insert it in the center hole of the Action Block, #104. This hole in the Action Block #104 is specifically designed for the removal of the Top Lever.

### **S&W Supply Company**

5308 Timberline Trail • Rapid City SD 57702

☎ (605) 341-4412 Phone/Voice Mail • 📠 (605) 348-3696 Fax

✉ [whiz@swsupply.com](mailto:whiz@swsupply.com) • Website: <http://www.swsupply.com>

8. CAREFULLY tap the punch; forcing the Top Lever DOWN (you have the Receiver up-side-down). When you drive the Top Lever down you will be releasing the Top Lever Coil Spring #121 and what looks like a slotted head screw #111, the Top Lever Locking Piece.

**NOTE:** This #111 is the actual part the holds the Top Lever in place and is what operates the lever to make it close. The slot is designed for alignment and SHOUL NOT BE TURNED like a screw to loosen.

**IMPORTANT:** As you tap the punch and in the process of forcing the Top Lever out of the Receiver, parts #111 and #121 coil spring and locking piece will want to launch themselves. I recommend that you cover the area with a towel to prevent the loss of these items.

9. Examine the coil spring #121... There are THREE STYLES of these available. In most cases the coil spring will or should measure as follows”

Perazzi Top Lever Locking Piece (111) and Lever Return Spring (121)

	MX8	MX8	TM1 & Old Style MX8																				
#111																							
#121																							
	<table border="1"> <tr><td>Slug Diameter:</td><td>0.255"</td></tr> <tr><td>Overall Length:</td><td>0.713"</td></tr> <tr><td>Coil Spring Length:</td><td>0.914"</td></tr> <tr><td>Coil Outside diameter:</td><td>0.170"</td></tr> </table>	Slug Diameter:	0.255"	Overall Length:	0.713"	Coil Spring Length:	0.914"	Coil Outside diameter:	0.170"	<table border="1"> <tr><td>Slug Diameter:</td><td>0.292"</td></tr> <tr><td>Overall Length:</td><td>0.735"</td></tr> <tr><td>Coil Spring Length:</td><td>1.155"</td></tr> <tr><td>Coil Outside diameter:</td><td>0.212"</td></tr> </table>	Slug Diameter:	0.292"	Overall Length:	0.735"	Coil Spring Length:	1.155"	Coil Outside diameter:	0.212"	<table border="1"> <tr><td>Slug Diameter:</td><td>0.255"</td></tr> <tr><td>Overall Length:</td><td>0.413"</td></tr> </table>	Slug Diameter:	0.255"	Overall Length:	0.413"
Slug Diameter:	0.255"																						
Overall Length:	0.713"																						
Coil Spring Length:	0.914"																						
Coil Outside diameter:	0.170"																						
Slug Diameter:	0.292"																						
Overall Length:	0.735"																						
Coil Spring Length:	1.155"																						
Coil Outside diameter:	0.212"																						
Slug Diameter:	0.255"																						
Overall Length:	0.413"																						

Please be aware that there is a 3rd size of #111 for the MX guns. Typically all DB81 use the larger diameter shown above. However some guns (and we have no serial number to identify which ones) use an even smaller diameter coil spring. This spring measures 0.167: OD. I sell no more than 10 of these annually.

Furthermore, and regarding the TM & Old Style tapered coil shown above: These are no longer available from Perazzi. Instead there is now an updated 2-coil pair used to replace this easily fatigued tapered coil.

S&W Supply Company  
(605) 341-4412 - email: whiz@swsupply.com

C:\MY DOCUMENTS\PERAZZI\TOP LEVER SPRING DESIGNS.JPG

10. Clean this pocket entirely.

**NOTE:** Look at the Top Lever and notice the full length groove in it and understand how this groove relates to how the #111 “screw driver head looking” Locking Piece fits into this groove. You will want to orientate #111 into position so that if you look down into the Top Lever cavity in the Receiver, you can see its correct position in order to install the Lever and #111.

## REASSEMBLY

### S&W Supply Company

5308 Timberline Trail • Rapid City SD 57702

☎ (605) 341-4412 Phone/Voice Mail • 📠 (605) 348-3696 Fax

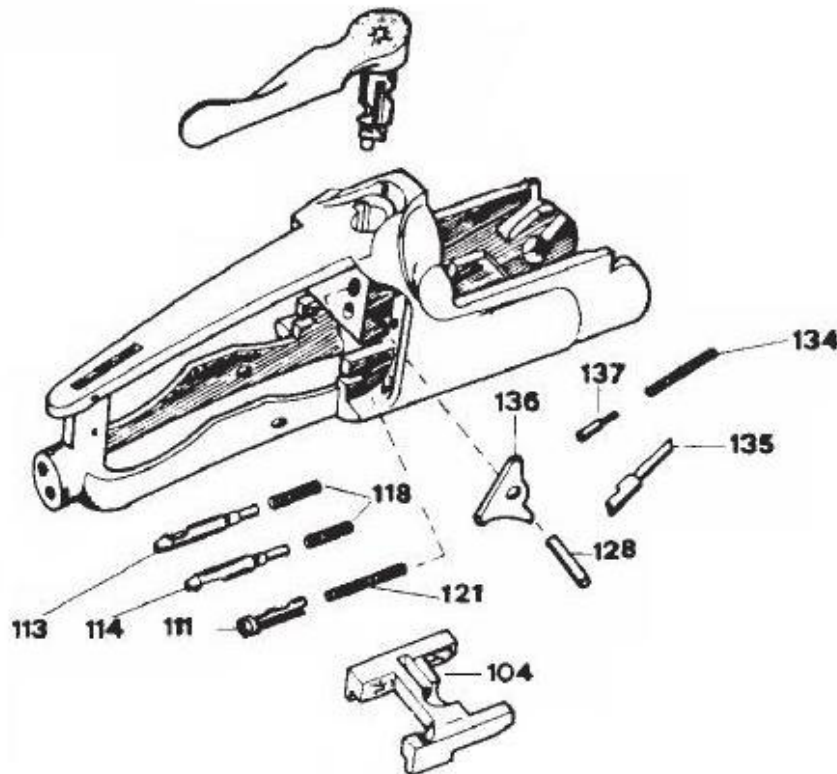
✉ [whiz@swsupply.com](mailto:whiz@swsupply.com) • Website: <http://www.swsupply.com>

1. You will insert the new coil spring #121 and Locking Piece #111 into the rear of the Receiver. I recommend you place the Receiver in a soft jawed vice to do this.
2. You should use a gunsmith screw driver to hold piece #111 such that its groove is vertical. IT MUST BE TURNED such that its groove is TOWARDS the Top Lever cavity. You will press in on this piece just enough to be able to tap the Top Lever back into its standard position.

**NOTE: MAKE SURE THE LOCKING BLOCK IS ALL THE WAY FORWARD.**

3. You will continue to press #111 in until the Top Lever easily returns to its normal position.
4. Once the Top Lever is installed correctly reinsert the Firing Pin coils, lightly oiled, and Firing Pins in and orientate them to permit the insertion of pin #128.

RECOMMENDATIONS: Thoroughly clean all parts in lacquer thinner and oil prior to reinsertion. I use Rem Oil.



### S&W Supply Company

5308 Timberline Trail • Rapid City SD 57702

☎ (605) 341-4412 Phone/Voice Mail • 📠 (605) 348-3696 Fax

✉ [whiz@swsupply.com](mailto:whiz@swsupply.com) • Website: <http://www.swsupply.com>

## ADDENDUM

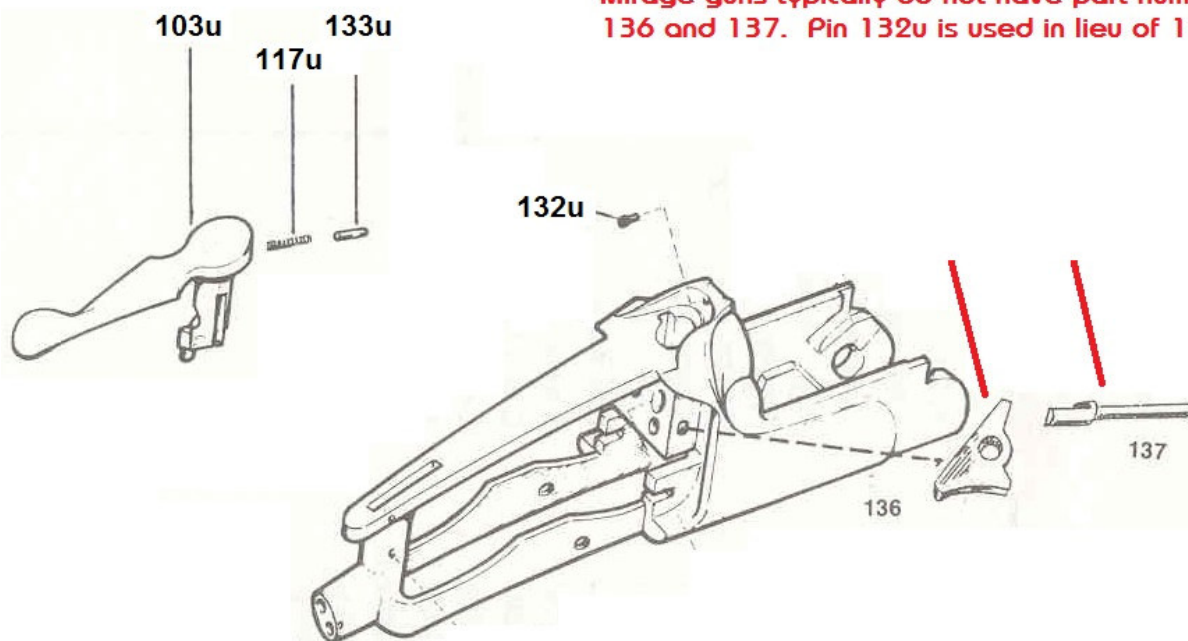
### Additional Procedures for Reinstallation on Older Receivers

Mirage and some Comp 1 receivers have their Top Lever Return Pins located at 12 o'clock on the receiver's face. Should your receiver be of this design, then do step Disassembly #6 and Reassembly #3 and refer to instructions below.

### Mirage Receiver

Caution is requested in order to properly install  
Pin 133u, Spring 117u, and Pin 132u

Mirage guns typically do not have part number  
136 and 137. Pin 132u is used in lieu of 137.



- Prior to inserting the Top Lever into position, visually ensure that Top Lever Release Pin #132u is IN the receiver and facing correctly.
- When reinserting the Top Lever #103 into the Action Block #104, gently tap the top lever down ONLY far enough to lock it into the Action Block #104 and at the same time securely holding the Top Lever Return Spring Guide #111 into place.
- You want the Top Lever left UP just high enough to expose the hole in the Top Lever so that you are able to insert coil spring 117u, and lock pin 133u into the Top Lever's hole.
- It is tricky to keep pressure on pin 133u and keep it insert fully into the Top Lever so that you can gently tap the top lever DOWN fully into its final position.

### S&W Supply Company

5308 Timberline Trail • Rapid City SD 57702

☎ (605) 341-4412 Phone/Voice Mail • 📠 (605) 348-3696 Fax

✉ [whiz@swsupply.com](mailto:whiz@swsupply.com) • Website: <http://www.swsupply.com>